



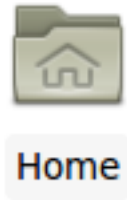
SDK Basic Usage

1	<b>Contents</b>	
2	<b>Overview of SDK features</b>	<b>2</b>
3	File browser . . . . .	2
4	Eclipse IDE . . . . .	2
5	Apertis API documentation . . . . .	3
6	<b>Shutting down / restarting the virtual machine</b>	<b>3</b>
7	<b>Audio settings</b>	<b>5</b>
8	<b>Change the keyboard layout</b>	<b>5</b>

9 **Overview of SDK features**

10 Take a moment to familiarize yourself with some of the more commonly used  
 11 tools in the SDK. These include the file browser, Eclipse, DevHelp and the  
 12 simulator. All of these tools have shortcut links placed on the desktop.

13 **File browser**



14 This icon opens the file manager so you can access  
 15 the local folders and use the shared folder for exchanging documents between  
 16 your host system and the virtual machine. You should be able to find your  
 17 shared folder under **Places** on the left hand side of the file manager window.

18 **Eclipse IDE**



19 Eclipse is the IDE used for application development in the  
 20 SDK. Eclipse includes a custom Apertis plugin for updating the sysroot from  
 21 within Eclipse.

## 22 Apertis API documentation

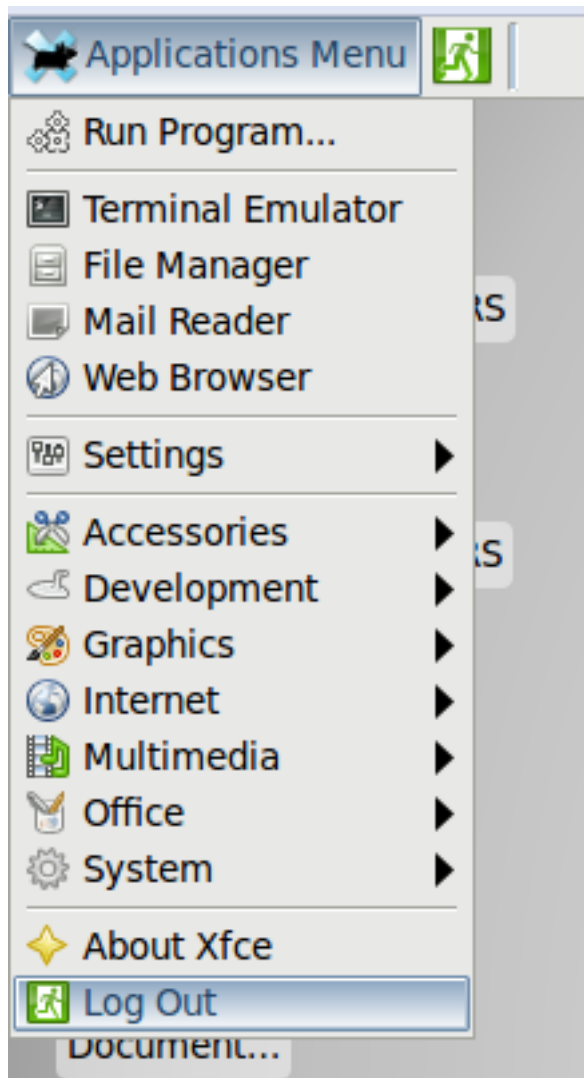


Documentation

23 DevHelp is the standard browser for offline API  
24 documentation across many Open Source projects. The DevHelp installation in  
25 the SDK provides a local, offline version of the all the documentation found in  
26 the Application Developer Portal, including the Apertis API references.

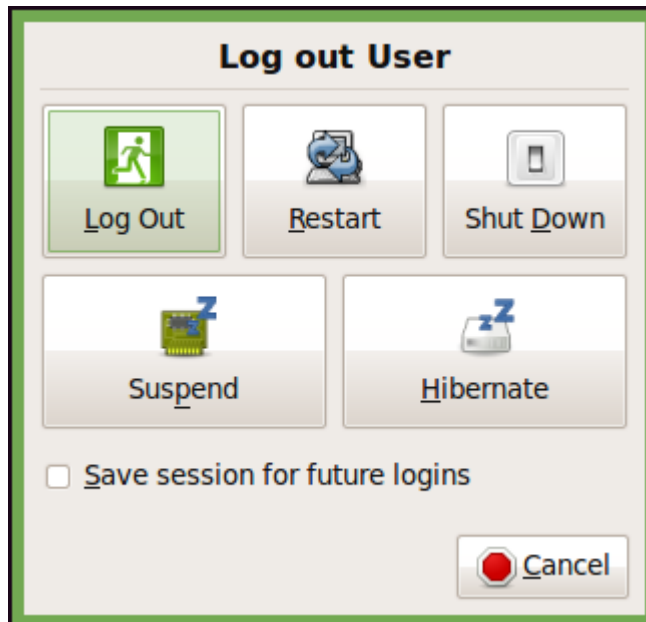
## 27 Shutting down / restarting the virtual machine

28 If you want to shut the virtual machine down, you can use the icon in the top  
29 right corner of the screen. If you want to restart it, go to **Applications Menu**  
30 and click **Log Out**:



31

32 In the dialog box, you can choose if you want to log out, restart the virtual  
33 machine, or shut it down.



34

## 35 Audio settings

35

36 In order to make sure that the audio player output is heard from the simulator  
37 make sure that the below settings are done:

36

- 38 • Unmute Audio in host machine.
- 39 • Go to Applications menu › Multimedia › Pulse Audio Volume Control
- 40 • Select **Output Devices** tab.
- 41 • Make sure that the Audio speaker is **Unmuted**.

40

42 With these settings, Audio player output should be heard over speakers.

42

## 43 Change the keyboard layout

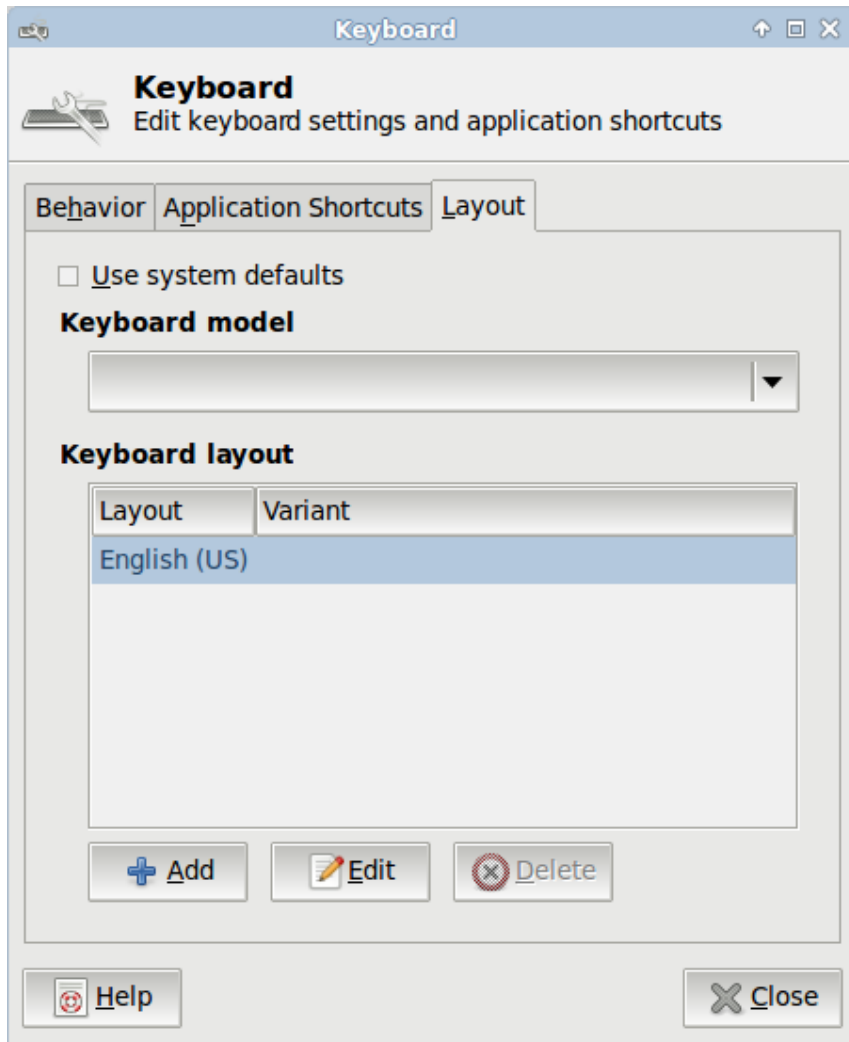
43

44 You might want to modify your keyboard layout for the Apertis operating sys-  
45 tem. The default keyboard layout is **US**. To change it, please follow these  
46 steps:

44

- 47 • In the SDK, go to Applications Menu Settings and choose Keyboard.
- 48 • In the dialog box, select the tab Layout, uncheck Use system defaults and  
49 click **Edit** under Keyboard layout. Select your required keyboard layout  
50 from the list, click **OK** and close the window. You do not need to select a  
51 Keyboard model.

48



52